



The Dahlem Seed Bank at the Botanic Garden and Botanical Museum Berlin-Dahlem and the Seed Bank for Crop Wild Relatives (Genbank für Wildpflanzen für Ernährung und Landwirtschaft, WEL)



Elke Zippel & Albert-Dieter Stevens

FU Berlin, Botanischer Garten und Botanisches Museum Berlin-Dahlem
Dahlemer Saatgutbank (Dahlem Seed Bank)
Königin-Luise Str. 6-8, D-14195 Berlin, email: e.zippel@bgbm.org

The conservation of biodiversity is one of the greatest challenges today. Aim of **ex-situ conservation** of plants in seed banks (or gene banks) or in living garden collections is **to support in-situ conservation efforts** (target 8 of the **GSPC** (Global Strategy for Plant Conservation, 2002) and to provide living plant material for research. It is a sustainable and effective tool to maintain genetic diversity, and to relieve collection pressure from wild populations. Seed banks provide an **easy accessibility to the seed samples** according to national and international treatments.

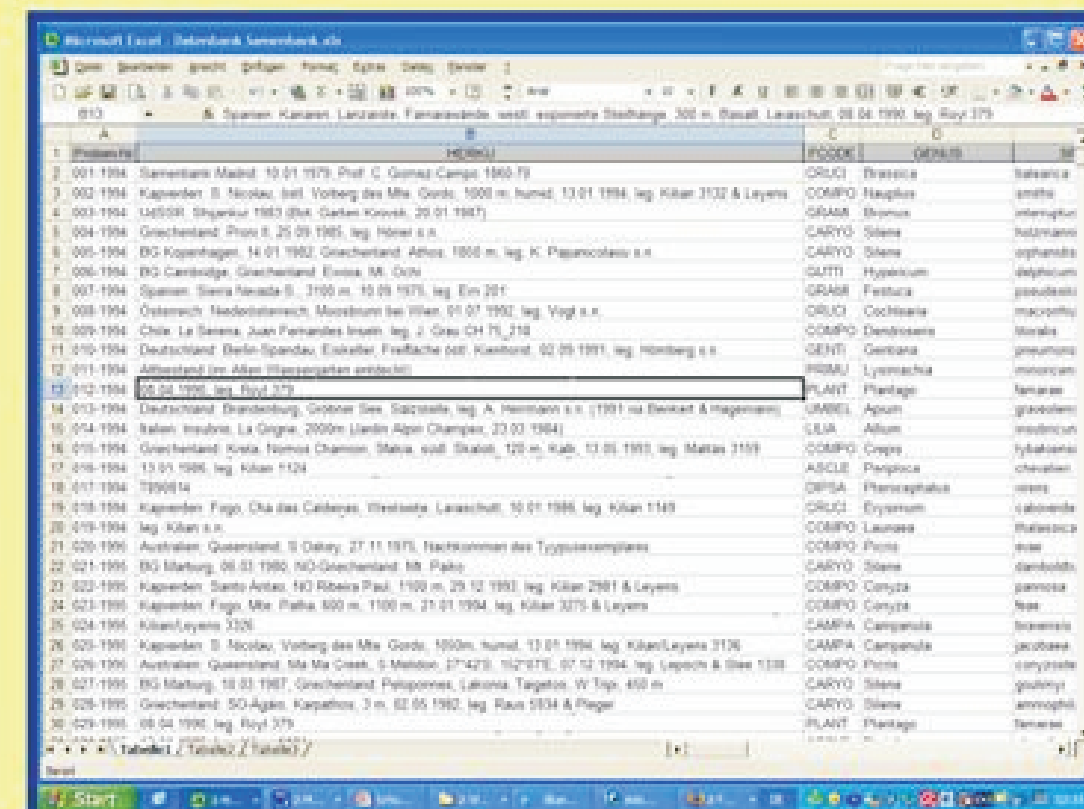
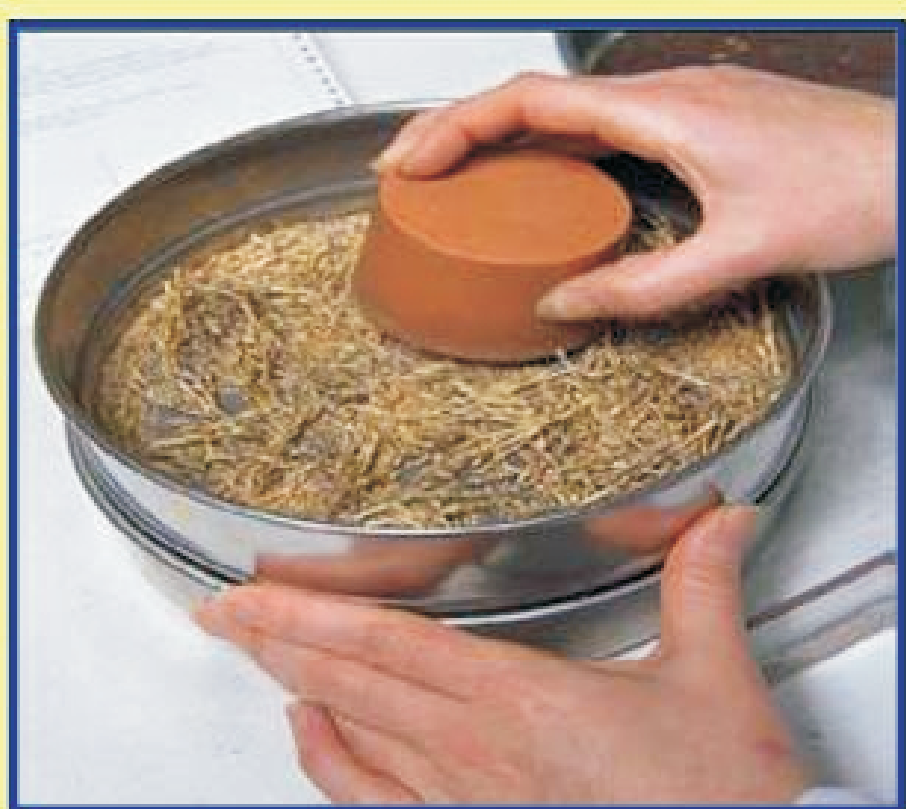
The Dahlem Seed Bank

Founded 1994 as genebank for wild plants, with main focus on threatened plants of Germany and the Eastern Mediterranean Area



Procedure in our Seed Bank

- Seed collection in the field, collection of herbarium specimens
- Cleaning of the seeds in the lab
- Drying seeds in a drying chamber
- Routine germination tests
- Long-term storage at -24° C
- Comprehensive and accurate documentation of all data concerning the seed samples



Collection and curation of the seeds follow the **ENSCONET** standards (European Native Seed Conservation Network)



Seed Use

The Dahlem Seed Bank provides a seed collection of high quality for different purposes:

- Sustainable living ex-situ collection in **long-term storage**



- Seeds for **ex-situ cultivation** of endangered species



- **Restoration projects**

Genebank for Crop wild relatives in Germany (Genbank für Wildpflanzen für Ernährung und Landwirtschaft, WEL)

Network partners

Botanischer Garten Universität Osnabrück, Botanischer Garten und Botanisches Museum Berlin-Dahlem (Freie Universität Berlin), Pädagogische Hochschule Karlsruhe, Botanischer Garten Universität Karlsruhe, Botanischer Garten Universität Regensburg



Aim of the network

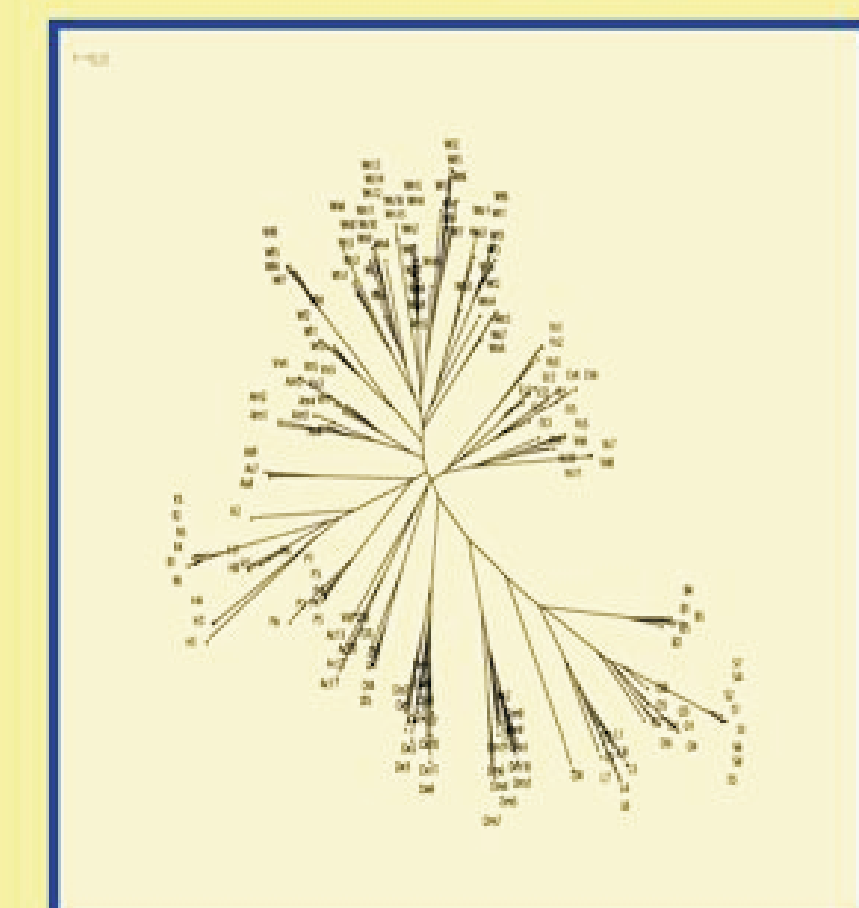
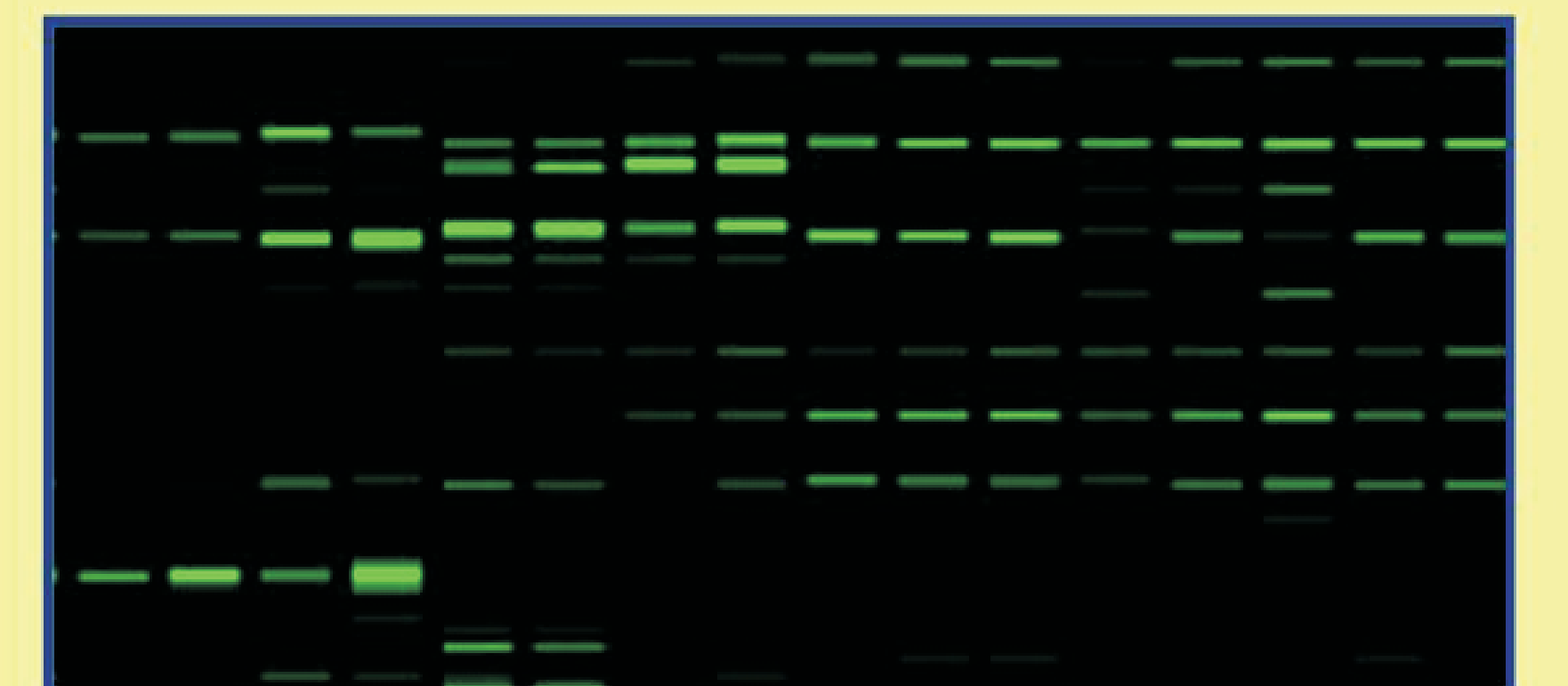
Establishment of a German Genebank for native wild crops or crop wild relatives to ensure their genetic variability for the future

Targets:

- Compiling a target species list as representative selection of mostly common native wild crops or crop wild relatives
- Collecting seeds from the 300 target species across the geographic and ecological range in Germany
- Storing the seeds in the seedbanks of the network partners
- Online seed offer

Website:

<http://www.biologie.uni-osnabrueck.de/genbank-wel/Einfuehrung/>



- **Research**



Basis of **seed dissemination** are the rules of the International Plant Exchange Network (IPEN) 2003, in accordance with the Convention on Biological Diversity (CBD) 1997 and the Global Strategy for Plant Conservation (GSPC) 2002

Dissemination for commercial use is restricted to seeds collected within the WEL project and follows the German species protection law and the International Treaty on Plant Genetic Resources for Food and Agriculture 2001